

MSCA
Marie Skłodowska-Curie Actions
Developing talents, advancing research

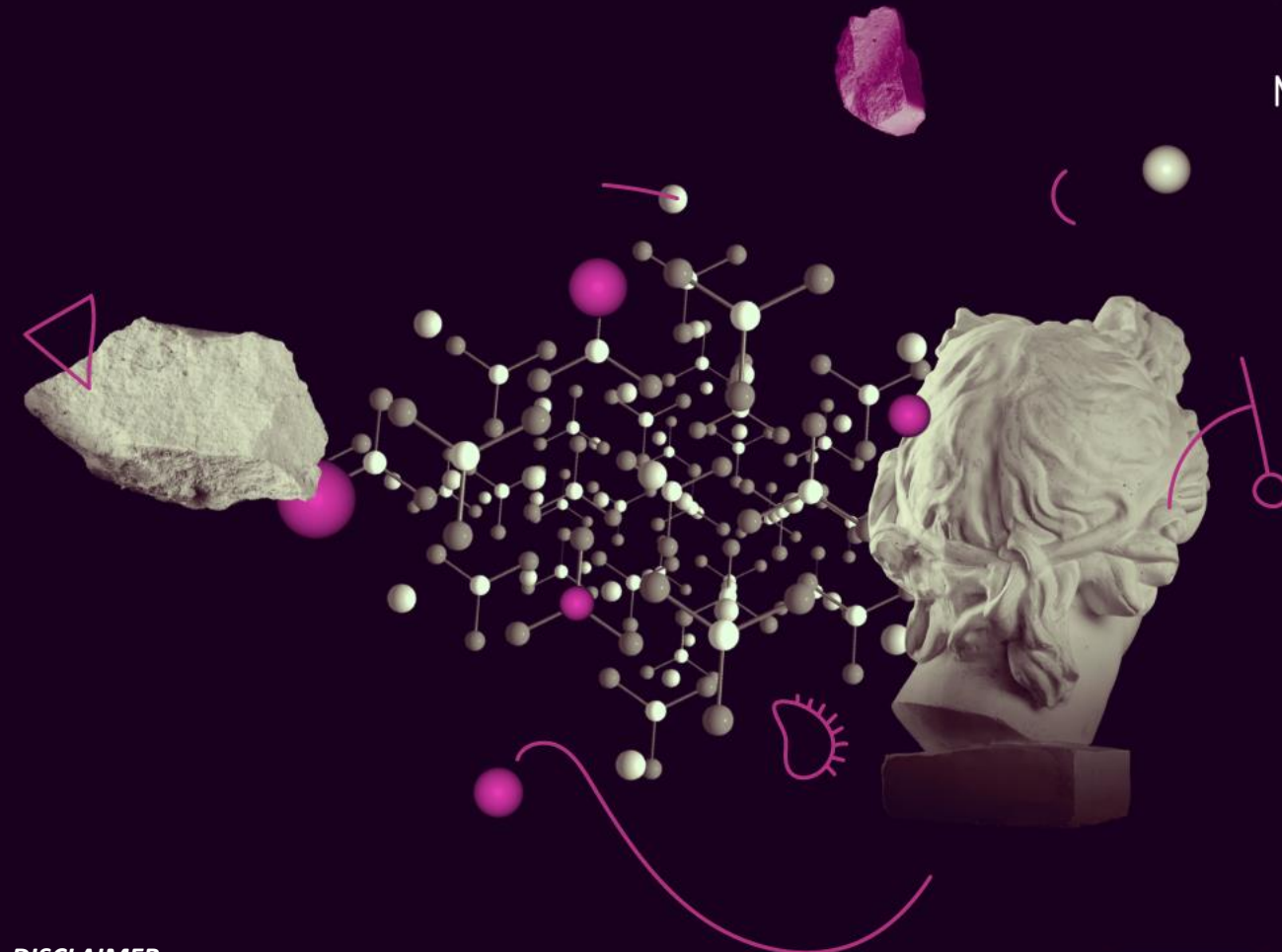


MSCA Postdoctoral Fellowships

Mika Levonen

European Research Executive Agency (REA)

14 May 2025



DISCLAIMER: This presentation is provided for information purposes only and is not intended to replace consultation of any applicable legal sources. Neither the European Commission nor the European Research Executive Agency (or any person acting on their behalf) can be held responsible for the use made of the guidance provided in this document.

DISCLAIMER:

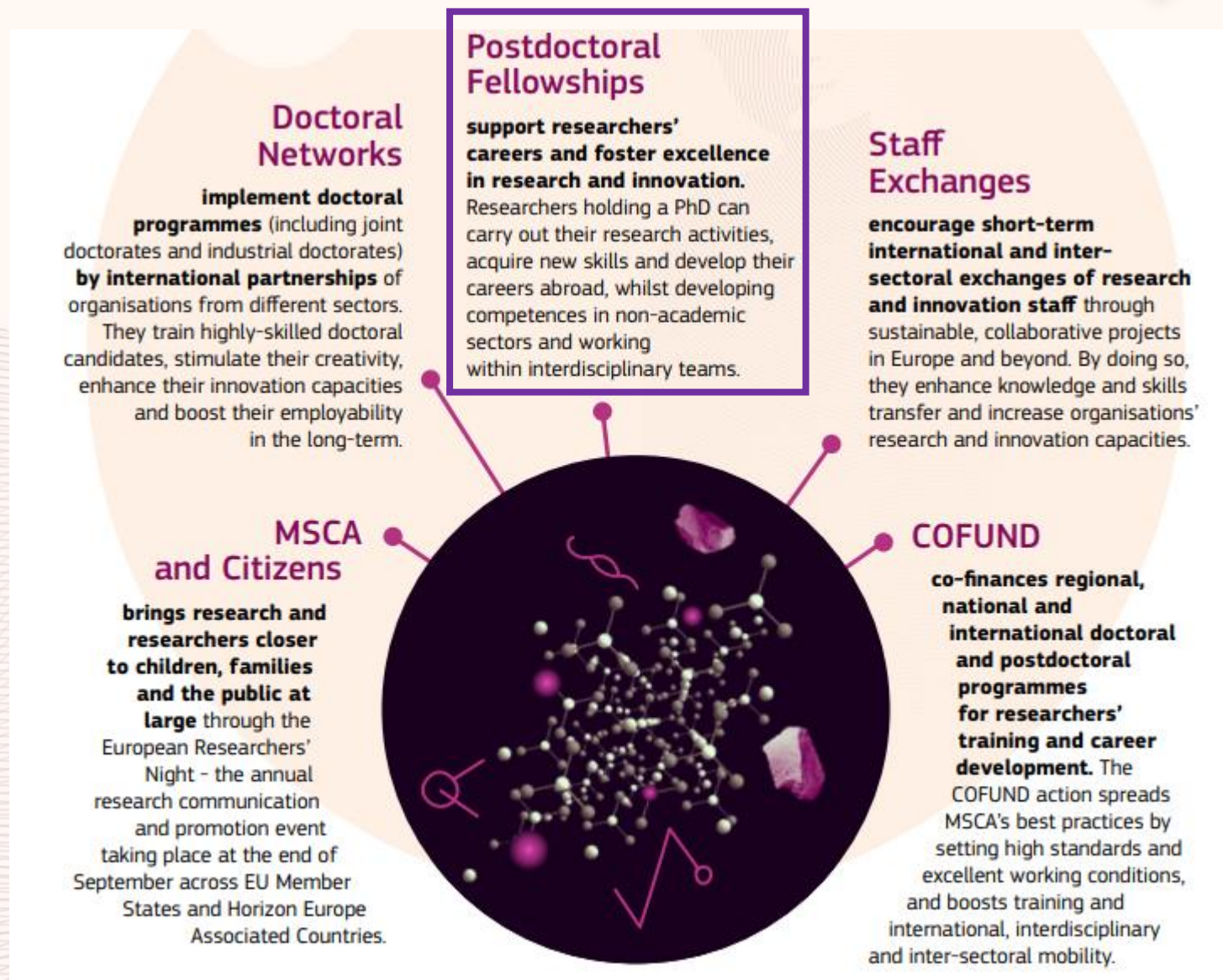
This presentation is provided for information purposes only and is not intended to replace consultation of any applicable legal sources. Neither the European Commission nor the European Research Executive Agency (or any person acting on their behalf) can be held responsible for the use made of the guidance provided in this document.

An amended version of the MSCA Work Programme 2023-2025 has been pre-published and is planned to be adopted mid-May 2025. Check the [EU Funding & Tenders Portal](#) for updated information

Overview

- Overview of the MSCA Programme and of the MSCA Postdoctoral Fellowships (PF)
- Key aspects of the PF 2025 call
- Proposal preparation and submission
- Evaluation process
- Some data on previous applications from Norwegian beneficiaries/ researchers

The MSCA under Horizon Europe



MSCA Postdoctoral Fellowships

Objective

“Enhance the creative and innovative potential of researchers holding a PhD, wishing to acquire new skills through advanced training, international, interdisciplinary and inter-sectoral mobility.”

MSCA-PF 2025

Provisional Budget: EUR 404.29 million (to be confirmed)

- ✓ EUR 343.65 million - European Fellowships
- ✓ EUR 60.64 million - Global Fellowships

Call opening date: 8 May 2025

Call deadline: 10 September 2025

Key points about MSCA-PF

Postdoctoral researchers only [ELIGIBILITY]

Max. 8 years postdoctoral research experience [ELIGIBILITY]

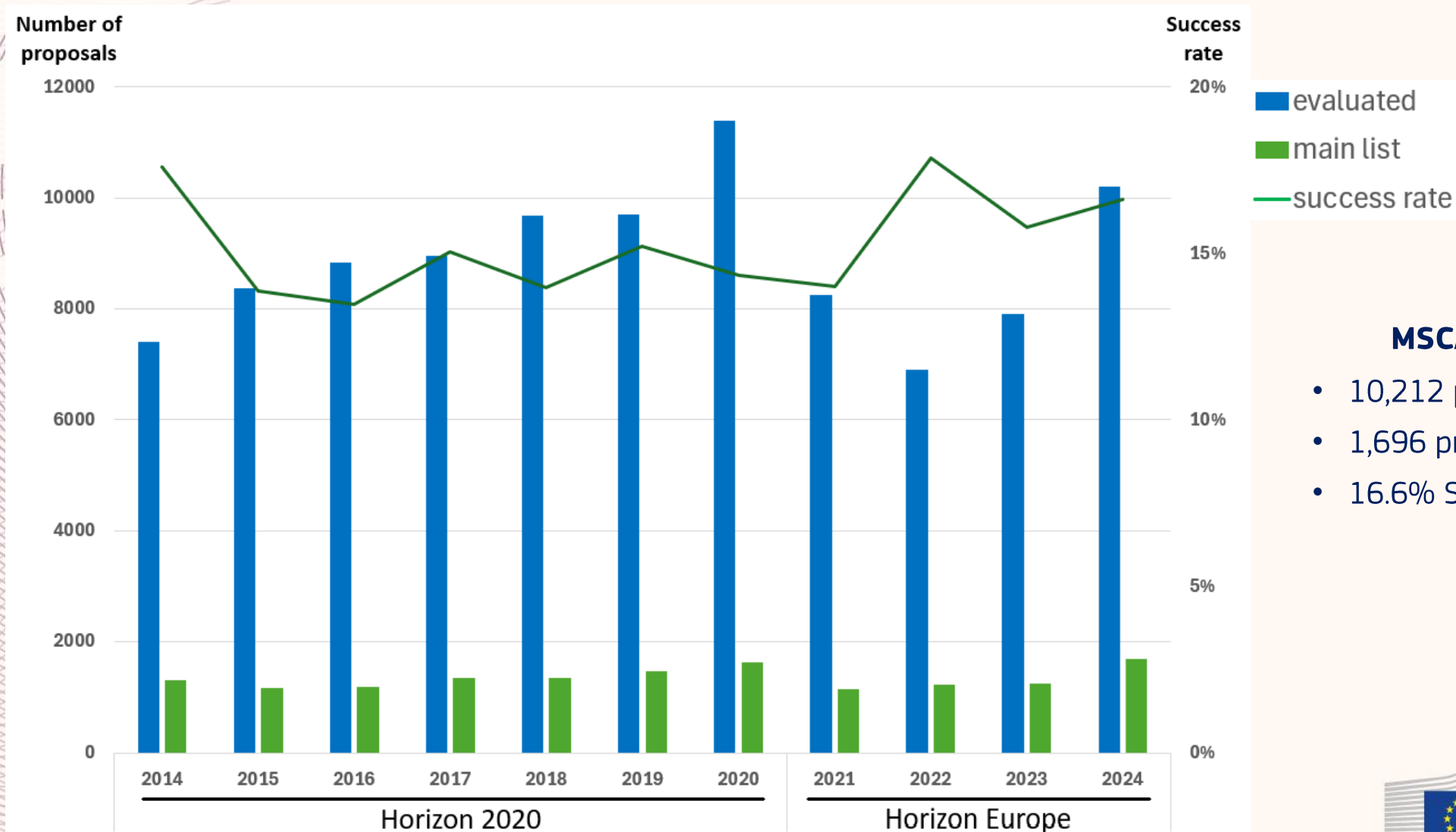
Researcher mobility scheme [ELIGIBILITY]

Training and career development through research

Secondments encouraged (worldwide, up to 1/3 of project duration)

Non-Academic Placements possible (up to 6m at end of project)

A very popular programme



MSCA-PF 2024 call

- 10,212 proposals evaluated
- 1,696 proposals funded
- 16.6% Success rate

MSCA Postdoctoral Fellowships

- **One beneficiary (Mono-beneficiary)**
 - Must be in EU MS or Horizon Europe-Associated Country
- **One researcher**
 - Post-Doc
 - Max. 8 years following PhD award date
- **Open to all research domains, including Euratom**
- **Two Types:**
 - European Fellowships (EF)
 - Global Fellowships (GF)

European Fellowships – EF

Researcher (PhD): Any Nationality

Single period

Beneficiary:

Located in EU Member State
or HE Associated Country



12-24 Months duration (including
optional secondments)

+ Optional non-academic placement (NAP), up to 6 months

Global Fellowships– GF

Researcher (PhD): National or long-term
resident* of an EU Member State or HE
Associated Country

Two periods:

- **Outgoing phase** – in a Third country,
12 – 24 months
- **Return phase:** at the beneficiary
(EU Member State or HE Associated
Country), 12 months



24-36 Months total duration (including
optional secondments)

* Definitions of the long-term resident given in Horizon Europe Work Programme 2023-2025 / 2. Marie Skłodowska-Curie Actions (European Commission Decision C(2024) 2371 of 17 April 2024)

** in GF: it's possible to include a max. 3-month max. secondment at the beneficiary at the start of project)



ERA FELLOWSHIPS

- **Host organisations** (beneficiaries) in **Widening Countries** (e.g. Latvia, Lithuania, Poland and Slovakia)
- Open to **researchers of any nationality**
- **Evaluation under MSCA-PF 2025 call:** tick box in Part A agreeing to be considered for the ERA fellowships call
- Eligible proposals considered for ERA fellowship funding if they failed to reach the main list under the MSCA-PF-EF call
- Applicants significantly increase their funding opportunities to be funded
- Indicative Budget for 2025: EUR 8 million

MSCA – EURATOM Research and Training

*‘To enhance nuclear expertise and excellence as well as synergies between Programmes, organisations active in nuclear research established in one of EU Member States or countries associated to the Euratom Research and Training programme 2021-2025, are eligible to participate.’**

- Applicants must comply with all conditions defined in the MSCA Postdoctoral Fellowships calls set in the Work Programme.
- Specific eligibility conditions that apply to MSCA postdoctoral fellowships in the research areas covered by the Euratom Research.
- Indicative budget: EUR 1 million

Eligibility Criteria

Postdoctoral Researchers only

- Must be “*in possession of a doctoral degree*” before call deadline
- If the degree is not awarded yet, must have had a successful, “*unconditional*” defence before call deadline

Max. 8 years postdoctoral research experience

- Measured from date of PhD award (time outside research not counted)

Researcher Mobility

- Must not have resided or carried out their main activity in country of the beneficiary (EF) or of the host for the outgoing phase (GF) for more than 12 months in the 36 months immediately before the call deadline
- For GF, must be National or long-term resident of EU Member States or HE Associated Country

Example 1

European Fellowship

- German national researcher awarded a PhD in 2020 in France.
- Still residing and working in France
- Applies for a European Fellowship together with a host institution in Germany.

ELIGIBLE?

- Awarded a PhD before the Call deadline;
- less than 8 years' experience in research since award of PhD;
- has not resided in Germany for more than 12 months in previous 3 years.



Example 2

Global Fellowship

- Indian researcher living in Latvia for the previous 3 years (up to the call deadline)
- PhD in 2022
- Beneficiary (return phase host) in Germany, and outgoing phase in the USA.

ELIGIBLE?

- Awarded a PhD before the call deadline
- Less than 8 years work in research since award of PhD
- Less than 12 months in the USA in the 3 years prior the call deadline
- ...but “long-term resident” in EU/AC?



Secondments & Non-Academic Placements*

Do not confuse:

- Secondment
- Non-Academic Placement (NAP)
- Short visits (e.g. field work)



Secondment(s) / NAP / short visits are allowed within the same proposal

Use the correct terminology in the proposal!

* More details in the *MSCA Postdoctoral Fellowship 2025 Guide for Applicants*

Secondments (Optional)

- **Any country worldwide**
- **Any sector** (academic and non-academic)
- Can be divided into several shorter periods
- No additional budget
- **Duration:**
 - **European Fellowships:** Up to 1/3 of the standard project duration (e.g. for a 24-month project, the max. duration of a secondment is 8 months).
 - **Global Fellowships:** Up to 1/3 of the outgoing phase.
 - Secondment(s) must take place during the outgoing phase
 - A secondment of max. three months can take place at the beneficiary, at the start of the project

Non-Academic Placements – NAP (Optional)

- Must be implemented in the **non-academic sector***
- Must take place **after the standard duration of the fellowship**
- **Additional budget** for the NAP, to be encoded in Part A
- Must take place in **MS or HE Associated Country**
- **Maximum 6 months duration**

* Definitions of the academic and non-academic sectors are given page 108:

Horizon Europe Work Programme 2023-2025 / 2. Marie Skłodowska-Curie Actions (European Commission Decision C(2024) 2371 of 17 April 2024)

Some Examples

European Fellowship

Months	1	2	3	4	5	6	7	8	9	10	11	12	13	14	15	16	17	18	19	20	21	22	23	24	25	26	27	28	29	30
WP1																														
WP2																														
WP3																														
Secondments																														
NAP																														

Optional NAP, 6 M max,
must be located in MS or AS

Global Fellowship



Months	1	2	3	4	5	6	7	8	9	10	11	12	13	14	15	16	17	18	19	20	21	22	23	24	25	26	27	28	29	30	31	32	33	34	35	36
WP1																																				
WP2																																				
WP3																																				
....																																				
Secondments																																				

Optional, max. 3 months at the
start of project at the beneficiary

Optional,
anywhere in
the world

Optional
NAP
6M max
MS/AC

Budget*– PF-2025 Unit Contributions

MSCA Postdoctoral Fellowships	Contributions for the recruited researcher					Institutional unit contributions	
	Per person-month					Per person month	
	Living Allowance	Mobility Allowance	Family Allowance	Long-term leave allowance (if applicable)	Special needs allowance (if applicable)	Research, training and networking contribution	Management and indirect contribution
	€5,990**	€710	€660	€6700 x % covered by beneficiary	Requested unit x (1/number of months)	€1,000	€650

Figures are gross amount

*Draft figures pending the Work Programme adoption expected mid-May 2025

Living Allowance corrected by a **country correction coefficient (CCC) – NO = 135,6%

PROPOSAL PREPARATION

Updated Templates for the 2025 MSCA-PF call will be available in the Funding & Tenders portal – check the call page for updates!

[MSCA-PF 2025 Call page](#)

Call Deadline: 10 Sept 2025

Part A (Application Form)

- **Acronym** and **Title** for the project
- **Scientific Area** (i.e. 1 Panel out of the 8 proposed) - “best fit” for the evaluation of your proposal
- 3 to 5 “**Descriptors**” (keywords) which best characterise the content of the proposal, in descending order of relevance
 - First 3 descriptors linked to the panel you select, others unrestricted
- **Free keywords**
- **Abstract:** maximum 2,000 characters
- **Resubmission** of a proposal must be declared

Part A (Application Form)

- **Beneficiary Information**

→ Including validated Participant Information Code (PIC) and **supervisor**

- For **Global Fellowships: Outgoing phase host information**

→ Letter of Commitment (LoC) for the Outgoing phase host in **Part B2**

- Proposals with **NAP: NAP host information**

→ NAP budget to be added in budget table



Secondment hosts must not be included in Part A

- **Researcher Information**, including:

➤ PhD award date (or date of successful defence) *

➤ Countries of residence during the last 5 years up until the call deadline

* PhD more than 8 years before the call deadline: fill in the table for extensions for the time spent outside research - see the *MSCA PF 2025 Guide for Applicants* for detailed information

Part B1 (Technical Description)

Part B of the Proposal is comprised of *two documents* (**Part B1** and **Part B2**), to be uploaded as separate PDF files

Part B1:

- **Part B1 template** available on the MSCA-PF 2025 Call page is **mandatory**
- Technical description of the project
- **Limit of 10 pages** (excess pages will not be visible to evaluators)
- **Minimum font size 11 points**, with standard spacing, including texts in tables

Part B1 (Technical Description)

Criteria description, to be addressed:

1. Excellence	2. Impact	3. Quality and efficiency of the implementation
1.1 Quality and pertinence of the project's research and innovation objectives (and the extent to which they are ambitious, and go beyond the state of the art)	2.1 Credibility of the measures to enhance the career perspectives and employability of the researcher and contribution to his/her skills development	3.1 Quality and effectiveness of the work plan, assessment of risks and appropriateness of the effort assigned to work packages
1.2 Soundness of the proposed methodology (including interdisciplinary approaches, consideration of the gender dimension and other diversity aspects if relevant for the research project, and the quality of open science practices)	2.2 Suitability and quality of the measures to maximise expected outcomes and impacts, as set out in the dissemination and exploitation plan, including communication activities	3.2 Quality and capacity of the host institutions and participating organisations, including hosting arrangements
1.3 Quality of the supervision, training and of the two-way transfer of knowledge between the researcher and the host	2.3 The magnitude and importance of the project's contribution to the expected scientific, societal and economic impacts	
1.4 Quality and appropriateness of the researcher's professional experience, competences and skills		



Part B2 (Technical Description)

- **No formal page limit**
- **CV of the Researcher** (indicative length: 5 pages)
- **Capacity of the Participating Organisations** (Sections 5.1 and 5.2)
 - Beneficiary
 - Outgoing phase host for GF (if GF)
 - NAP host (if applicable)
 - Secondment host (if applicable)
 - Organisation linked to the beneficiary (if applicable)
- **Letter of Commitment from the outgoing phase host**
(for Global Fellowships only)



EVALUATION PROCESS

The MSCA-PF Evaluation

Large-Scale Evaluation

Large number of proposals

Standard Peer-Review

3 experts per proposal

Expert Balance

experience,
nationality, gender,
age, sector, etc.

8 Scientific Panels

CHE, ECO, ENG, ENV,
LIF, MAT, PHY, SOC

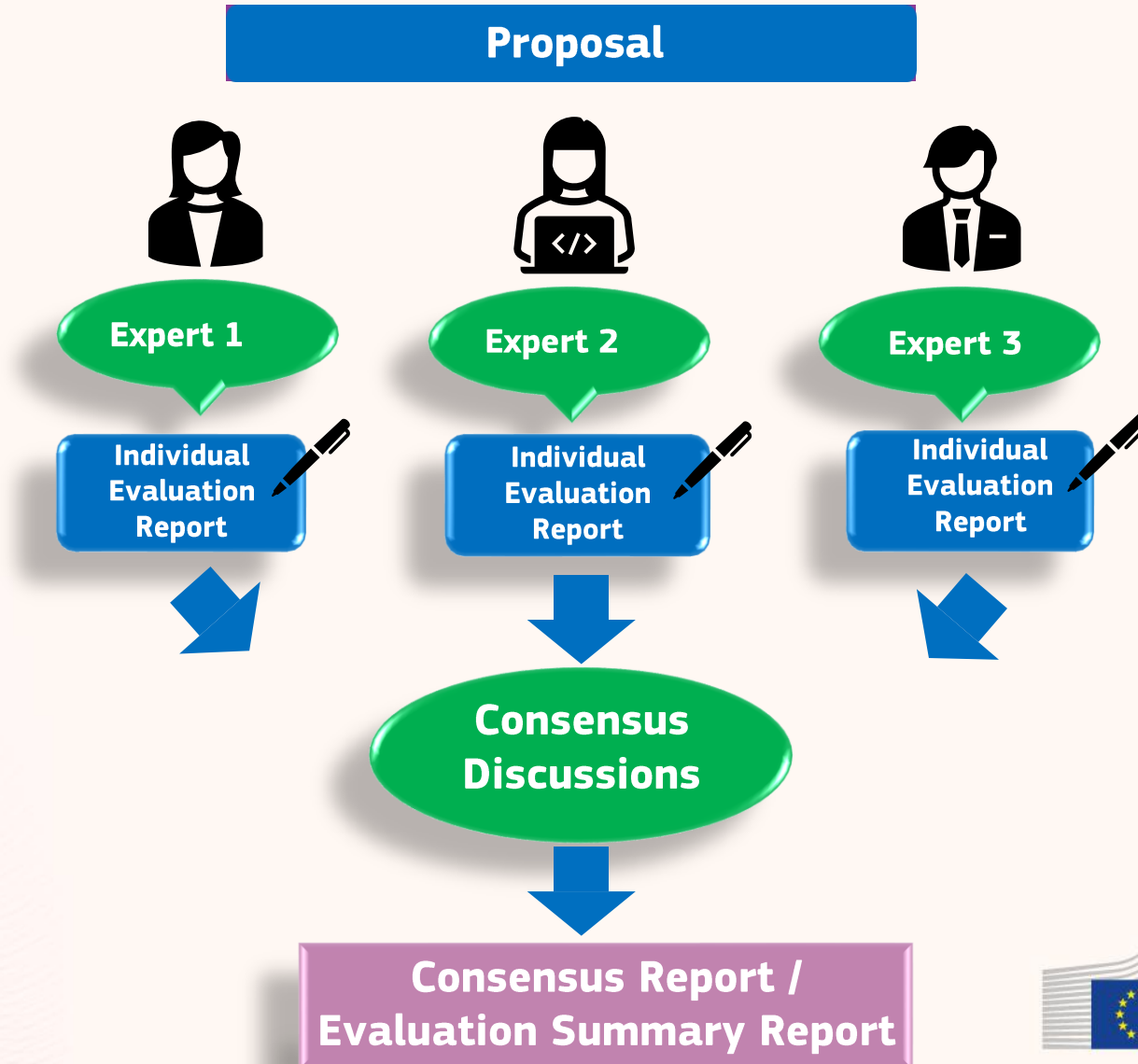
Single-Stage Evaluation

Timing: from call deadline to funding decision:
5 months (+3 months to GA signature)

Evaluation Process Overview

ALLOCATION OF PROPOSALS TO EXPERTS

based on the scientific field of the proposal (including the *DESCRIPTORS* and *KEYWORDS* provided by the Applicant)



Evaluation criteria

1. Excellence	2. Impact	3. Quality and efficiency of the implementation
1.1 Quality and pertinence of the project's research and innovation objectives (and the extent to which they are ambitious, and go beyond the state of the art)	2.1 Credibility of the measures to enhance the career perspectives and employability of the researcher and contribution to his/her skills development	3.1 Quality and effectiveness of the work plan, assessment of risks and appropriateness of the effort assigned to work packages
1.2 Soundness of the proposed methodology (including interdisciplinary approaches, consideration of the gender dimension and other diversity aspects if relevant for the research project, and the quality of open science practices)	2.2 Suitability and quality of the measures to maximise expected outcomes and impacts, as set out in the dissemination and exploitation plan, including communication activities	3.2 Quality and capacity of the host institutions and participating organisations, including hosting arrangements
1.3 Quality of the supervision, training and of the two-way transfer of knowledge between the researcher and the host	2.3 The magnitude and importance of the project's contribution to the expected scientific, societal and economic impacts	
1.4 Quality and appropriateness of the researcher's professional experience, competences and skills		
50%	30%	20%
Criteria weighting		

Proposal Ranking

- **Proposals are ranked** – and funding allocated –
 - **by Scientific Panel**, and
 - **by type of Fellowship** (*European and Global Fellowships*)
- **Seal of Excellence***: awarded to proposals which score $\geq 85\%$
- **Resubmission restriction** for proposals with same researcher + same host(s) scoring $<70\%$ in the previous call evaluation
- **REA staff** ensures the evaluation process rules are respected
- **Independent observer** scrutinises the entire evaluation

* <https://marie-sklodowska-curie-actions.ec.europa.eu/news/several-countries-make-funding-available-for-msca-seal-of-excellence-holders>

Common Errors



Missing the Call deadline

Not respecting eligibility requirements (i.e. PhD date, mobility or max 8 years research experience)

Exceeding the page limits

Missing Letter of Commitment (for Global Fellowships)

Confusing Secondments and Non-Academic Placements

Requesting an ineligible Non-Academic Placement

Non-compliance to minimum font required and other formatting conditions

Indicative timeline

Call Opening:

8 May 2025

Call Deadline:

10 Sept 2025

Evaluation Period:

Oct 2025 – Jan 2026

Information Letter:

Feb 2026

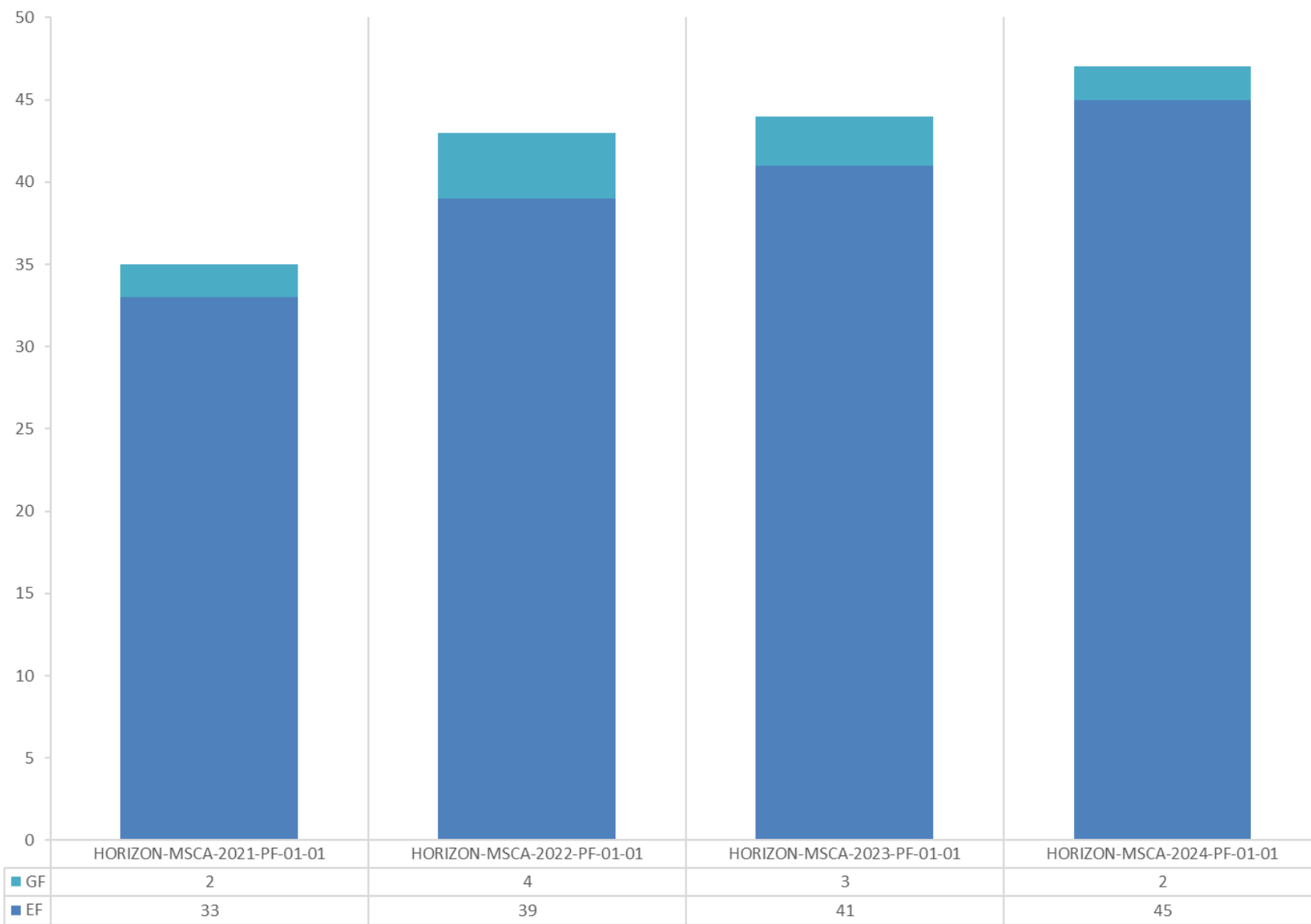
Project Starting Dates:

Apr 2026 – Sept 2027

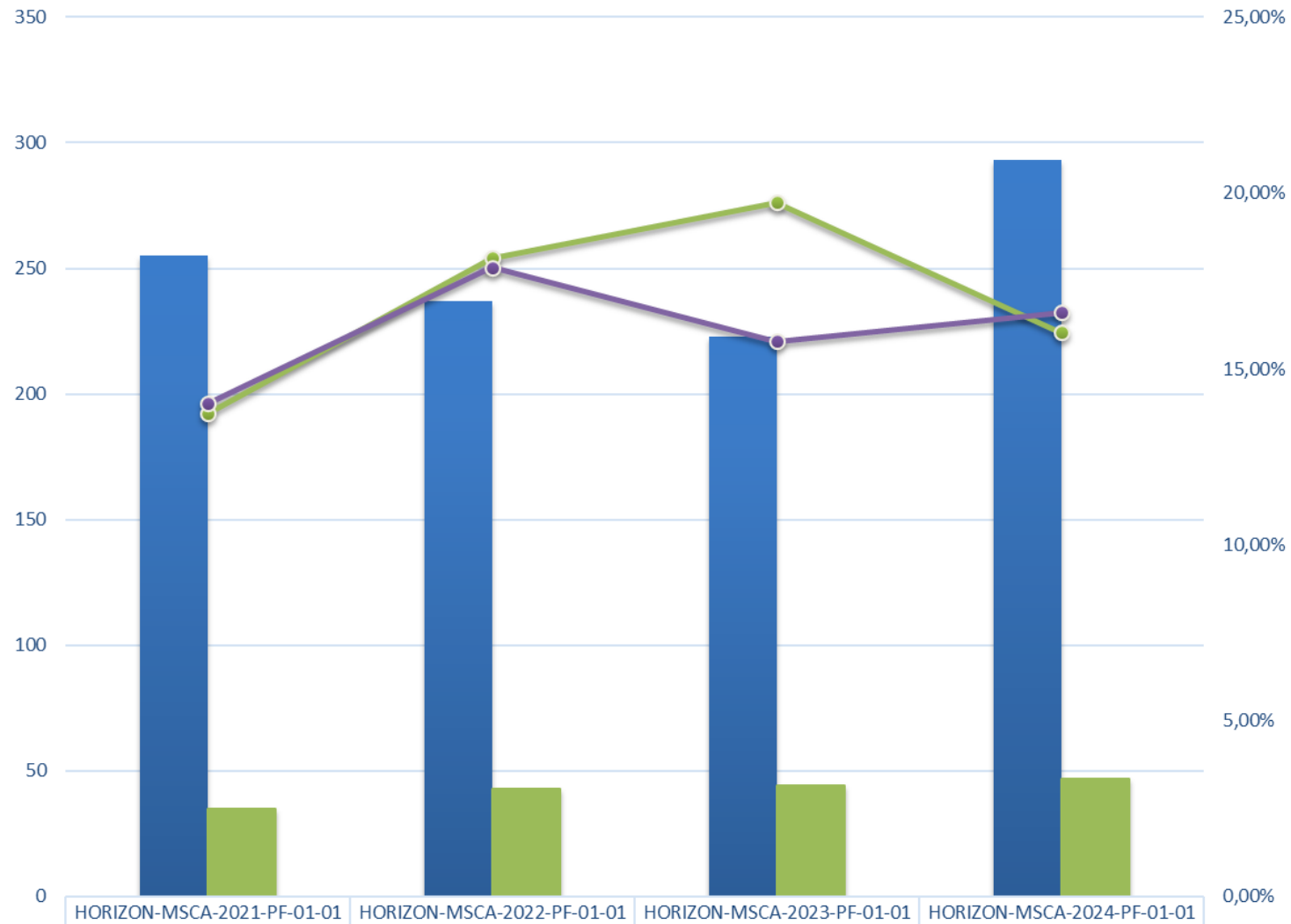


SOME DATA ON NORWEGIAN HOST INSTITUTIONS AND RESEARCHERS

GRANTS AT NO HOSTS

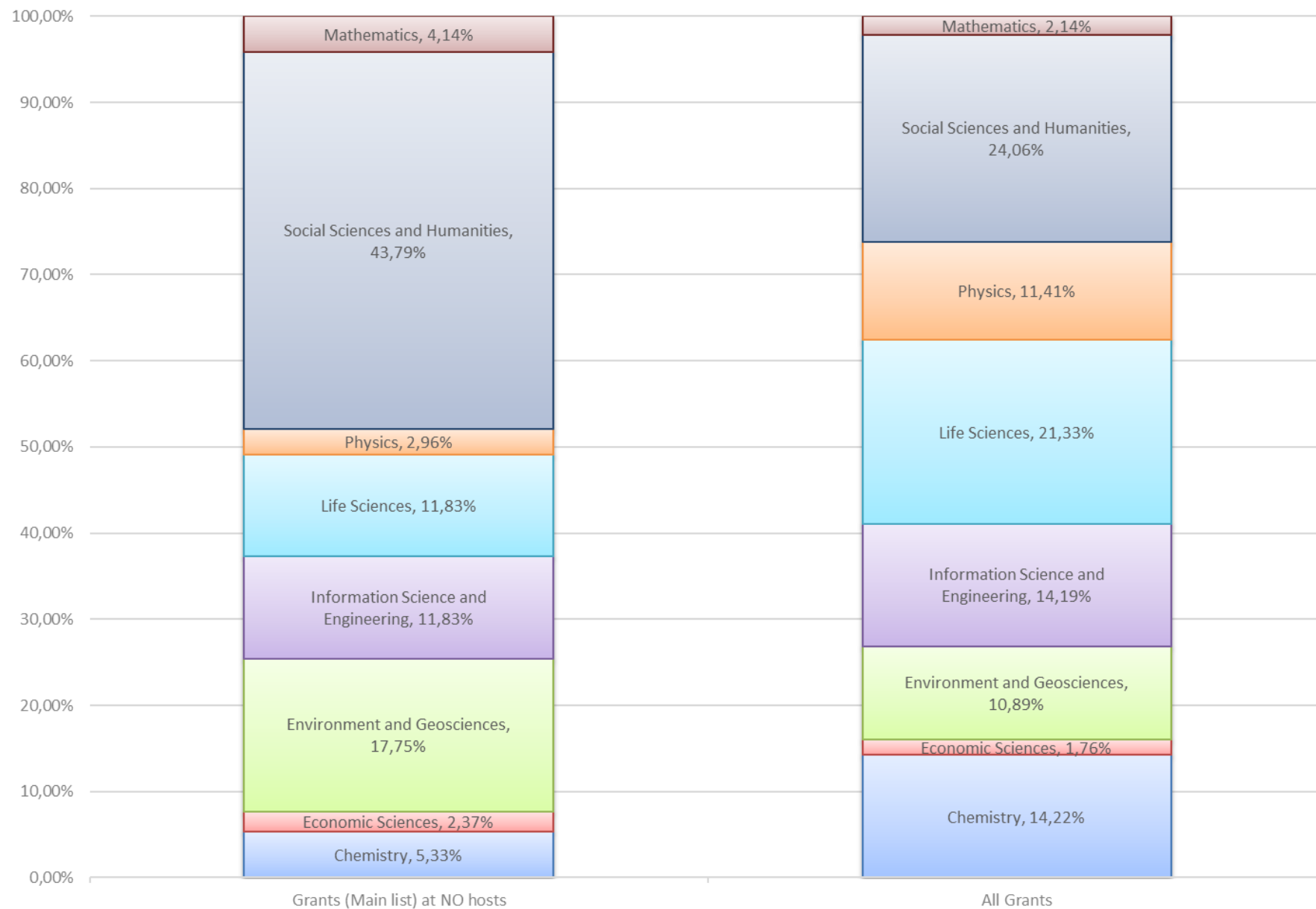


SUCCESS RATE OF NO HOSTS

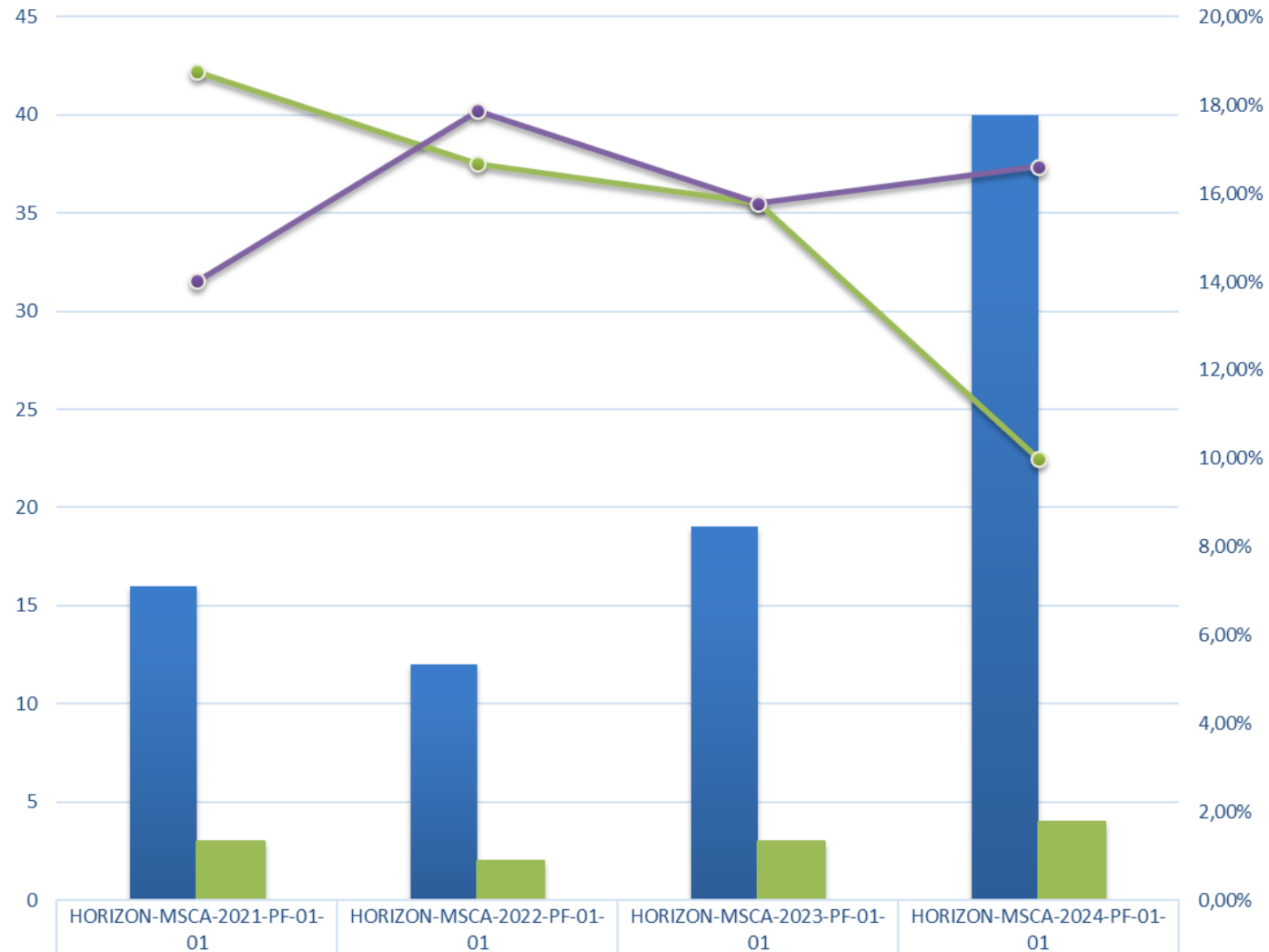


Proposals	255	237	223	293
Grants (Main list)	35	43	44	47
SUCCESS RATE OF NO HOSTS	13,73%	18,14%	19,73%	16,04%
Overall success rate for call	14,02%	17,88%	15,77%	16,61%

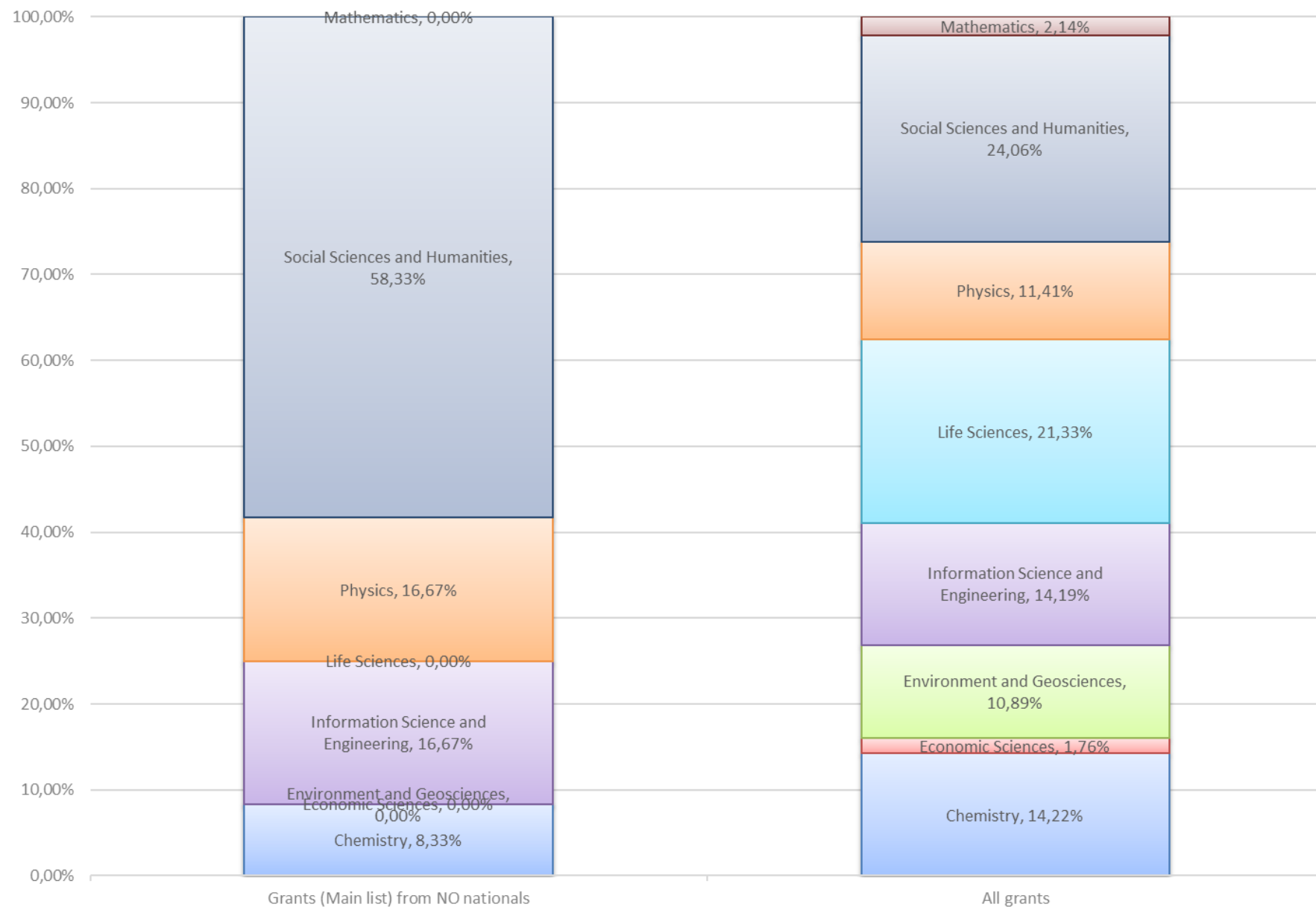
SCIENTIFIC AREA -NO HOSTS COMPARED TO ALL CALLS



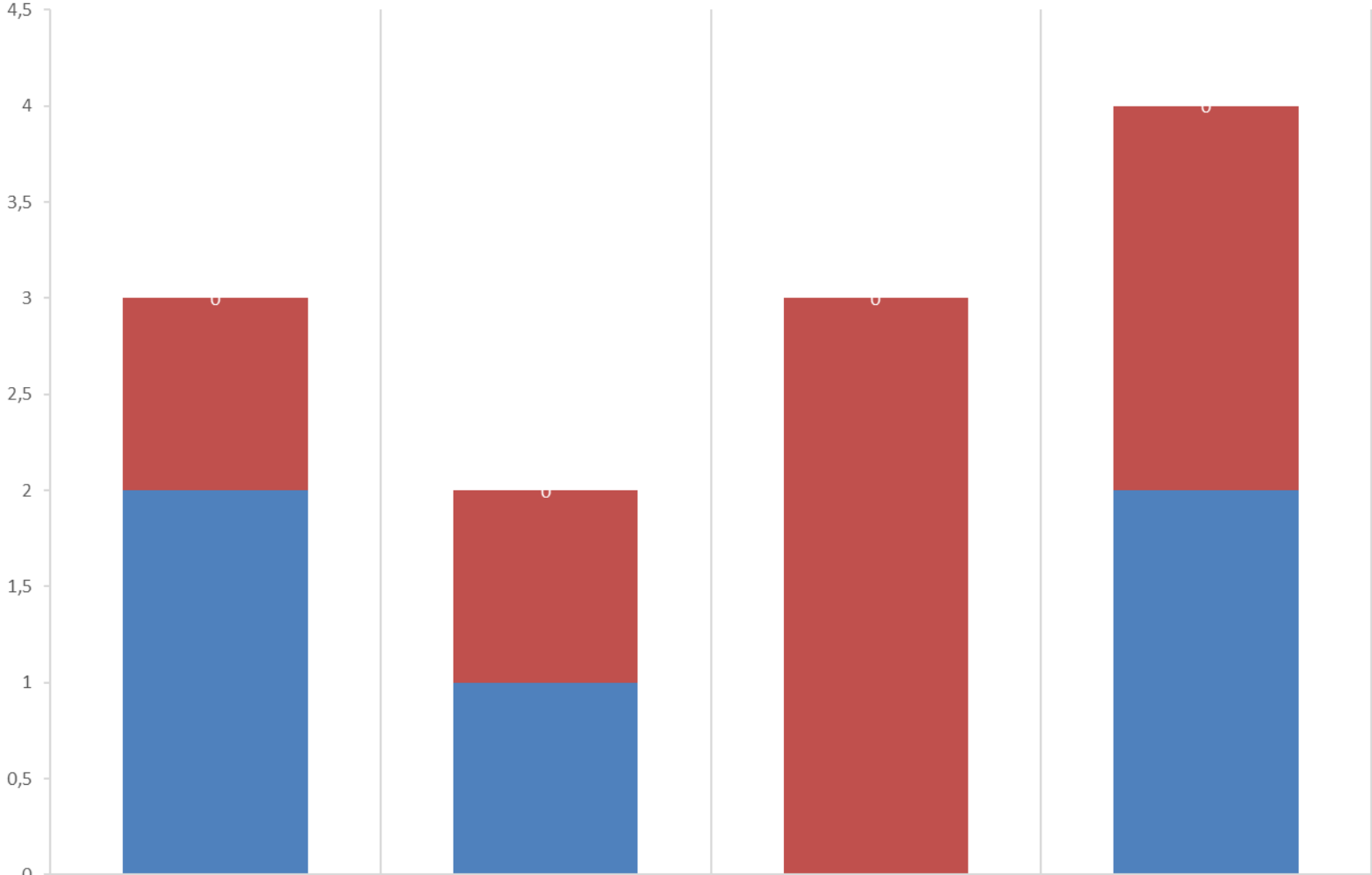
SUCCESS RATE FOR NO NATIONALS



SCIENTIFIC AREA - NO NATIONALS COMPARED TO ALL CALLS



GENDER DISTRIBUTION FOR GRANTHOLDERS WITH NO NATIONALITY



■ non binary	0	0	0	0
■ male	1	1	3	2
■ female	2	1	0	2



Resources and Guidance

- [MSCA PF 2025 – Call page on the EU funding & Tenders Portal](#)
- [MSCA Website](#)
- [National Contact Points](#)
- [Research Enquiry Service](#)
- [Funding opportunities under MSCA – European Commission](#)